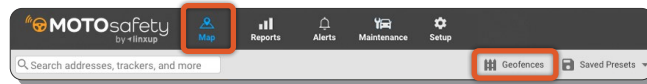


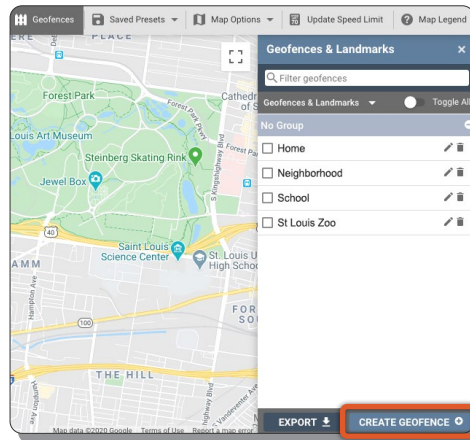
Geofence Setup

Geofences are invisible boundaries around a given area that can trigger an alert when a tracker crosses the boundary. The Geofences are often placed around locations your vehicles will frequently interact with, such as your home, office, schools, friends' houses, and more.

- 1 Log in to your Customer Portal and from the Map page click 'Geofences'.



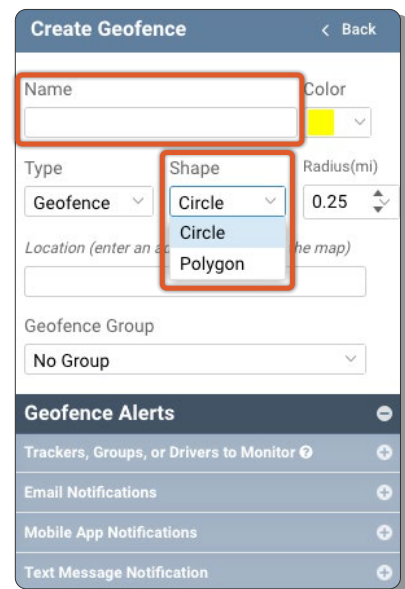
- 2 The right rail will pop out and you will need to select 'CREATE GEOFENCE' in the bottom right corner.



- 3 Name your Geofence and choose whether you would like to create a Circle Geofence or a Polygon Geofence.

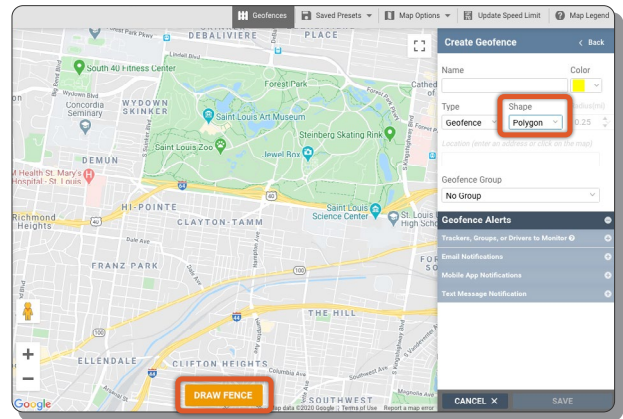
4 For Circle Geofences:

- Click the map where you would like the Geofence to be located and the physical address will automatically populate in the location field
- Set the desired radius
- You will see a preview of the Geofence on the map as you adjust the Geofence
- Expand the 'Geofence Alerts' to set criteria on what trackers trigger the alerts and how the alerts are received
- Click 'SAVE'

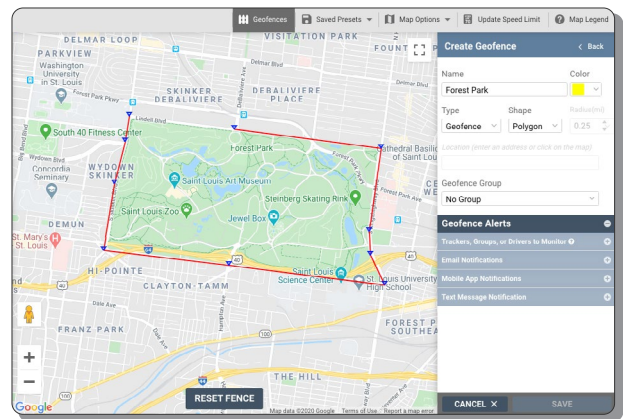


5 For Polygon Geofences:

- Click the orange 'DRAW FENCE' button and zoom in on the area you would like to Geofence



- Click on the map to outline the points of your geofence. You can drop as many points as you need.



- Complete the outline by connecting the last point with the first point. Once the points have been connected, the Geofence will turn yellow, signaling the fence creation was successful.
- Expand the 'Geofence Alerts' to set criteria on what trackers trigger the alerts and how the alerts are received
- Click 'SAVE'

