

OBD PLUG

Quick Start Guide



WE'RE CONFIDENT WE CAN MAKE IT RIGHT!

If you have any questions or problems with your GPS tracker please give us a call before you make a return:

MOTOSafety Customer Support

Phone: 1-877-732-4970

Email: support@motosafety.com

How are we doing? We'd love to know.

We hope you will be pleased with your order and the service you receive. We love to hear from customers about features they love, and ways we can continue to improve your experience. Leave us a review where you made your purchase. Thank you!

For valuable driver information, please like us on Facebook and follow us on Twitter. You can also check out our blog at www.motosafety.com/blog and try out the MOTOSafety Comprehensive Driving Course on our website.



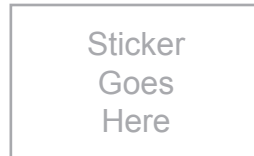
Activate Your Device

1 Open a web browser and go to: www.motosafety.com/getstarted

2 Create an account, or log in to your existing account.

The screenshot shows two columns: 'New Customers' and 'Already a Customer?'. The 'New Customers' section has fields for 'Activation Code', 'E-mail Address', 'Create Your Password', and 'Confirm Password', with a 'Next' button. The 'Already a Customer?' section has fields for 'Email Address' and 'Password', with a 'Sign In' button and a 'Forgot Your Password?' link. A note at the bottom says 'If not already on file, you may be prompted for your billing information.'

Here's a copy of your device activation code:



3 Follow the instructions for activating your device(s).

Make sure the activation code on your device matches the code on screen. Or, if your activation code does not show up re-enter it and press continue.

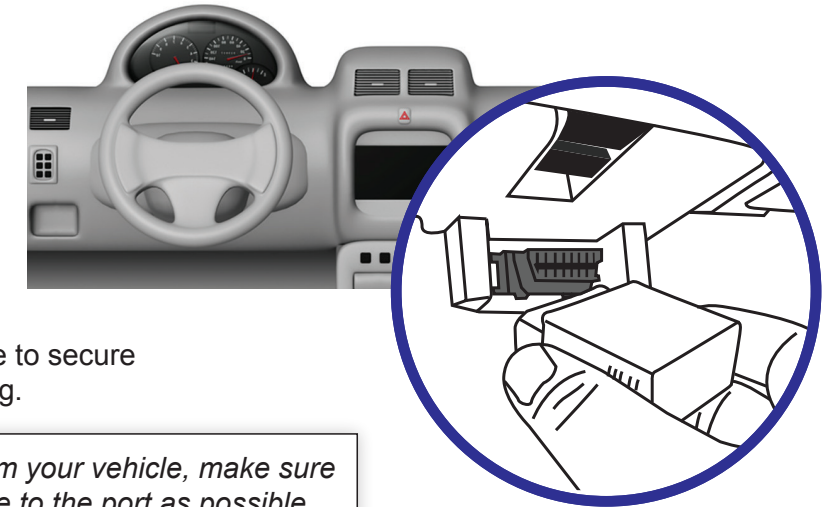


Install Your Plug-In Tracking Device

4 Locate the OBDII port of your vehicle and connect your device.

If you need help locating the connector, please reference your vehicle's owner manual.

You may use the enclosed zip tie to secure the device and prevent tampering.



When removing the device from your vehicle, make sure you grasp the device as close to the port as possible.

5 Start your vehicle, and check the lights on the GPS.

Cell (Orange)	Fast Blinking	Searching for a cell network
	Slow Blinking	Connected to network
	Off	Cell modem off (sleep mode), or disconnected
(Blue)	Internal Use Only	
GPS (Green)	Blinking	GPS lock (connected to satellites)
	Off	No GPS signal / Acquiring satellites

Your vehicle must be outside and not in a covered area so that it will receive GPS signal. When working properly, the orange and green lights will be on. You should see your car's location on the map (may take up to two hours).

IMPORTANT NOTICE: remove device before jump starting the vehicle.

Get to Know the MOTOSafety System



Setup

Customize the MOTOSafety system to make it work best for you.

Setup

- Device Setup
- Alert Settings
- Management
- Group Setup
- Mobile Apps

Device Setup
Below is a list of your devices. You can click the names and VIN to edit them. All changes are automatically saved.

First Name	Last Name	Group	VIN	Notes
Dan	Rogers		JTDBR32E770124589	
Maddie	Rogers		3FA6P0H1222025559	

Buttons: Add a New Device, Click to edit.

Callout: Set authorized hours, speeding alerts, and more.



Alerts

Use the Alerts section to review all alerts that occur within defineable dates.

Alerts

Date Range: May 12, 2016 | Group: All | Vehicle: All | Alert Type: All | Show Activity

Driver 1 (5 alerts)

Date	Type	Location	Description
May 12, 2016 04:09 PM	Idle Alert	4510-4518 Flad Ave, St. Louis, MO 63110, USA	Vehicle has been idling for
May 12, 2016 04:05 PM	Speeding Alert	1057 S Vandeventer Ave, St. Louis, MO 63110, USA	Demo 352648066758764 mph posted speed zone (H
May 12, 2016 03:53 PM	Speeding Alert	I-64, St. Louis, MO 63131, USA	Demo 352648066758764 mph posted speed zone (H
May 12, 2016 03:46 PM	Tamper Alert	12813 Olive Blvd, Creve Coeur, MO 63141, USA	Tracking device was recon may have been tampered v
May 12, 2016 03:46 PM	Ignition Alert	No Location Available	Vehicle started its ignition f

Driver 2 (10 alerts)

Date	Type	Location	Description
May 12, 2016 04:11 PM	Geofence Alert	Chester Field Ridge Dr, Chesterfield, MO 63017, USA	Exited geofence Test 1.
May 12, 2016 12:19 PM	Geofence Alert	16305 Swingley Ridge Rd, Chesterfield, MO 63017, USA	Entered geofence Test 1.

Callout: Click the address to see the location on a map.



Report

Review your driver's progress with the report card.



Report Card for Your Teen Driver

Month: June 2015

Overall Monthly Grade: **A**

This score reflects: 85 Speeding Alerts, 20 Accelerating Alerts, 14 Braking Alerts

1260 Miles Driven

Daily Overview: Line graph showing driving metrics over 30 days.

Trend: Bar chart showing driving metrics over time from April 2013 to February 2016.



Maintenance

Make vehicle maintenance easier with scheduled maintenance reminders.

Active Maintenance Reminders

Vehicle	Service Type	Service Interval	Next Service Due	Complete Service
Your Teen Driver	General Service	Every 1,000 miles	1,025 miles overdue	Complete Service
Your Teen Driver	State Inspection	Every 365 days	11 days overdue	Complete Service
Your Teen Driver	Air Filter	Every 730 days	501 days to go	Complete Service
Your Teen Driver	Tire Tread and New Tires	Every 2,190 days	712 days to go	Complete Service
Your Teen Driver	Oil Change	Every 4,000 miles	2,470 miles to go	Complete Service
Your Teen Driver	Tire Rotation	Every 5,000 miles	10,142 miles to go	Complete Service
Your Teen Driver	Power Steering Fluid	Every 4,000 miles	10,970 miles to go	Complete Service
Your Teen Driver	Serpentine Belt	Every 36,000 miles	13,092 miles to go	Complete Service
Your Teen Driver	Fuel Filter	Every 24,000 miles	16,092 miles to go	Complete Service
Your Teen Driver	Spark Plugs	Every 30,000 miles	18,092 miles to go	Complete Service
Your Teen Driver	Automatic Transmissio...	Every 24,000 miles	18,092 miles to go	Complete Service
Your Teen Driver	Coolant and Radiator ...	Every 24,000 miles	20,092 miles to go	Complete Service
Your Teen Driver	Brake Check	Every 24,000 miles	24,092 miles to go	Complete Service



Map

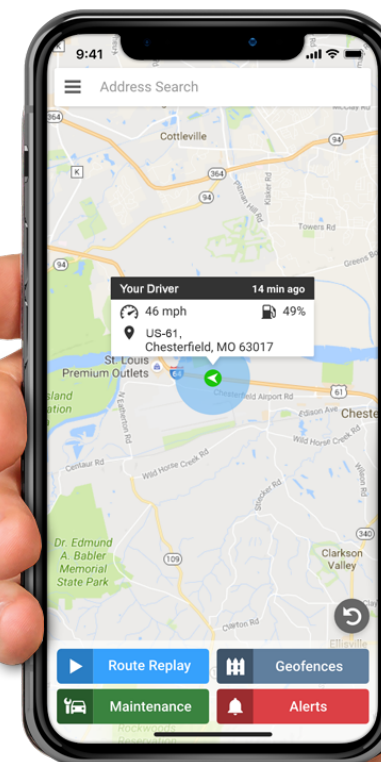
Locate your vehicle at all times, view its history, and manage your geofences.

Use Route Replay to coach your driver by reviewing their driving history.

Need help? Click the 'Help' icon, sign up for a webinar, or connect with a customer service agent.

A geofence can be a school, workplace, or a best friend's house and is a virtual boundary on the map.

Locate your vehicle at all times.



Download now! MOTOSafety Mobile App

- Track and monitor safe driving with:
- Alerts
- Real-time GPS tracking
- Driving report card

