

WIRED

# Quick Start Guide



## WE'RE CONFIDENT WE CAN MAKE IT RIGHT!

If you have any questions or problems with your GPS tracker please give us a call before you make a return:

MOTOsafety Customer Support  
Phone: 1-877-732-4970  
Email: support@motofsafety.com

### How are we doing? We'd love to know.

We hope you will be pleased with your order and the service you receive. We love to hear from customers about features they love, and ways we can continue to improve your experience. Leave us a review where you made your purchase. Thank you!

For valuable driver information, please like us on Facebook and follow us on Twitter. You can also check out our blog at [www.motofsafety.com/blog](http://www.motofsafety.com/blog) and try out the MOTOsafety Comprehensive Driving Course on our website.



## Activate Your Device

1 Open a web browser and go to: [www.motofsafety.com/getstarted](http://www.motofsafety.com/getstarted)

2 Create an account, or log in to your existing account.

**New Customers**  
Fill out the following to complete your registration:

Activation Code:

E-mail Address:

Create Your Password:

Confirm Password:

I agree to the [Terms & Conditions](#)

**Next**

**Already a Customer?**  
Simply log in and we'll walk you through the process of adding your new units.

Email Address:

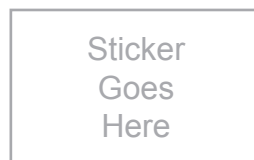
Password:

**Sign In**

[Forgot Your Password?](#)

*If not already on file, you may be prompted for your billing information.*

Here's a copy of your device activation code:



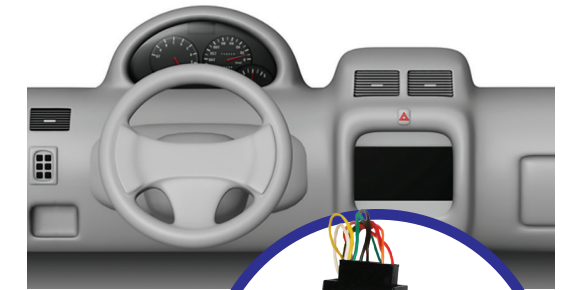
3 Follow the instructions for activating your device(s).

*Make sure the activation code on your device matches the code on screen. Or, if your activation code does not show up re-enter it and press continue.*



## Installing Your Wired Device

4 Wiring the device into a vehicle is easy, and requires installation inside the passenger compartment of the vehicle. The MOTOsafety wired device has a series of wires — you will only need to attach three of these wires to your vehicle (the additional wires are for future features or functions). The three wires you need are: the red wire (power), the longer of the two black wires (ground) and the white wire (ignition sense).



- a. Find the constant red power wire in your vehicle. Cut and strip this wire.
- b. Cut and strip the red wire on the MOTOsafety GPS device.
- c. Connect the two red wires and crimp. This connection provides power to the device.
- d. Connect the MOTOsafety black wire to your vehicle's chassis. This connection serves as a ground for the device.
- e. Locate the vehicle's ignition wire (reference the vehicle's wiring diagram in order to locate).
- f. Verify the ignition wire by measuring the operating voltage while the key is turned to the ON or START position (the voltage should read 0 VDC when the key is in the off position, and typically between 11V and 14V when in the ON position).
- g. Connect the white wire on the MOTOsafety device to the vehicle's ignition wire. This connection allows the device to report ignition OFF and ON events.
- h. An optional plastic zip tie is included to secure the device under the vehicle dash with the label that reads "Label Side Down" facing down.

Visit [www.motofsafety.com/wiredinstall](http://www.motofsafety.com/wiredinstall) to watch a video on the installation process.

5 Confirm the power connection

Following installation, allow 5-10 minutes for the MOTOsafety device to power up and obtain a cellular and GPS fix. Your vehicle must be outside and not in a covered area so that it will receive GPS signal. When working properly, the blue light will blink once every 3 seconds and you will see a blinking green light.

You should see your car's location on the map (may take up to two hours).



Cell (Blue)	Blinking 1x/second	Searching for a GSM network
	Blinking 1x/3seconds	GSM lock (connected to network)
	Off	Modem reboot
GPS (Green)	Solid	Searching for satellite
	Blinking	GPS lock (connected to satellite)

Please note: Should your vehicle require a jump start, you will have to replace the fuse in the wiring harness with a 3 volt fuse.

# Get to Know the MOTOSafety System



## Setup

Customize the MOTOSafety system to make it work best for you.

**Setup**

Device Setup  
Below is a list of your devices. You can click the names and VIN to edit them. All changes are automatically saved.

First Name	Last Name	Group	VIN	Notes
Dan	Rogers		JTDBR32E770124589	
Maddie	Rogers		3FA6P0H12E2925559	

Buttons: Add a New Device, Edit, Delete

Callouts: "Set authorized hours, speeding alerts, and more." (points to Alert Settings), "Click to edit." (points to Edit button)



## Alerts

Use the Alerts section to review all alerts that occur within defineable dates.

**Alerts**

Date Range: May 12, 2016 | Group: All | Vehicle: All | Alert Type: All | Show Activity

Date	Type	Location	Description
May 12, 2016 04:09 PM	Idle Alert	4510-4518 Flad Ave, St. Louis, MO 63110, USA	Vehicle has been idling for
May 12, 2016 04:05 PM	Speeding Alert	1057 S Vandeventer Ave, St. Louis, MO 63110, USA	Demo 352648066758764 mph posted speed zone (H
May 12, 2016 03:53 PM	Speeding Alert	I-64, St. Louis, MO 63131, USA	Demo 352648066758764 mph posted speed zone (H
May 12, 2016 03:46 PM	Tamper Alert	12813 Olive Blvd, Creve Coeur, MO 63141, USA	Tracking device was recon may have been tampered v
May 12, 2016 03:46 PM	Ignition Alert	No Location Available	Vehicle started its ignition f

Driver 2 (10 alerts)

Date	Type	Location	Description
May 12, 2016 04:11 PM	Geofence Alert	Chester Field Ridge Dr, Chesterfield, MO 63017, USA	Exited geofence Test 1.
May 12, 2016 12:19 PM	Geofence Alert	16305 Swingley Ridge Rd, Chesterfield, MO 63017, USA	Entered geofence Test 1.

Callout: "Click the address to see the location on a map." (points to a location in the alert list)



## Report

Review your driver's progress with the report card.



**Report Card for Your Teen Driver**

Month: June 2015

Overall Monthly Grade: **A**

This score reflects: 85 Speeding Alerts, 20 Accelerating Alerts, 14 Braking Alerts

1260 Miles Driven

Daily Overview: Line graph showing driving performance over 30 days.

Trend: Bar chart showing driving performance over time from April 2013 to February 2016.



## Maintenance

Make vehicle maintenance easier with scheduled maintenance reminders.

**Active Maintenance Reminders**

Vehicle	Service Type	Service Interval	Next Service Due	Complete Service
Your Teen Driver	General Service	Every 1,000 miles	1,025 miles overdue	Complete Service
Your Teen Driver	State Inspection	Every 365 days	11 days overdue	Complete Service
Your Teen Driver	Air Filter	Every 730 days	501 days to go	Complete Service
Your Teen Driver	Tire Tread and New Tires	Every 2,190 days	712 days to go	Complete Service
Your Teen Driver	Oil Change	Every 4,000 miles	2,470 miles to go	Complete Service
Your Teen Driver	Tire Rotation	Every 5,000 miles	10,142 miles to go	Complete Service
Your Teen Driver	Power Steering Fluid	Every 4,000 miles	10,970 miles to go	Complete Service
Your Teen Driver	Serpentine Belt	Every 36,000 miles	13,092 miles to go	Complete Service
Your Teen Driver	Fuel Filter	Every 24,000 miles	16,092 miles to go	Complete Service
Your Teen Driver	Spark Plugs	Every 30,000 miles	18,092 miles to go	Complete Service
Your Teen Driver	Automatic Transmissio...	Every 24,000 miles	18,092 miles to go	Complete Service
Your Teen Driver	Coolant and Radiator ...	Every 24,000 miles	20,092 miles to go	Complete Service
Your Teen Driver	Brake Check	Every 24,000 miles	24,092 miles to go	Complete Service



## Map

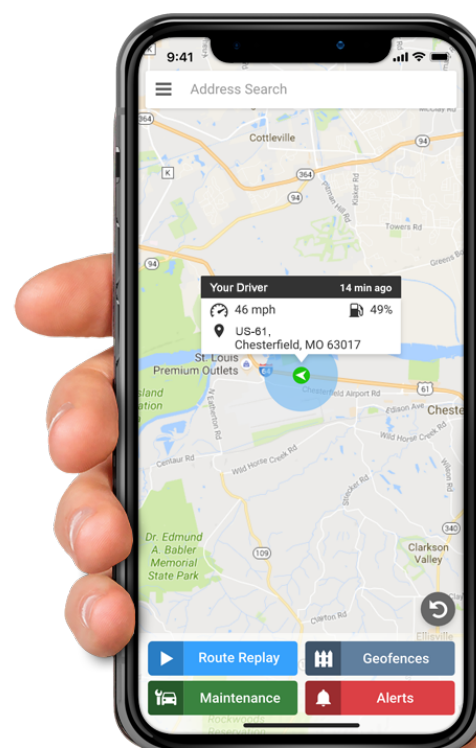
Locate your vehicle at all times, view its history, and manage your geofences.

Use Route Replay to coach your driver by reviewing their driving history.

Need help? Click the 'Help' icon, sign up for a webinar, or connect with a customer service agent.

A geofence can be a school, workplace, or a best friend's house and is a virtual boundary on the map.

Locate your vehicle at all times.



## Download now! MOTOSafety Mobile App

- Track and monitor safe driving with:
- Alerts
- Real-time GPS tracking
- Driving report card

